

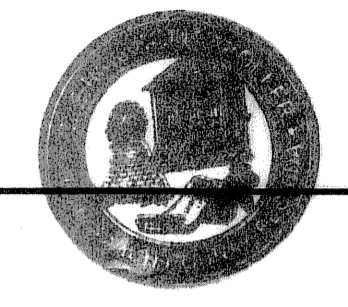
# BELLE GLADE BUSINESS PARK PHASE II

20050393919

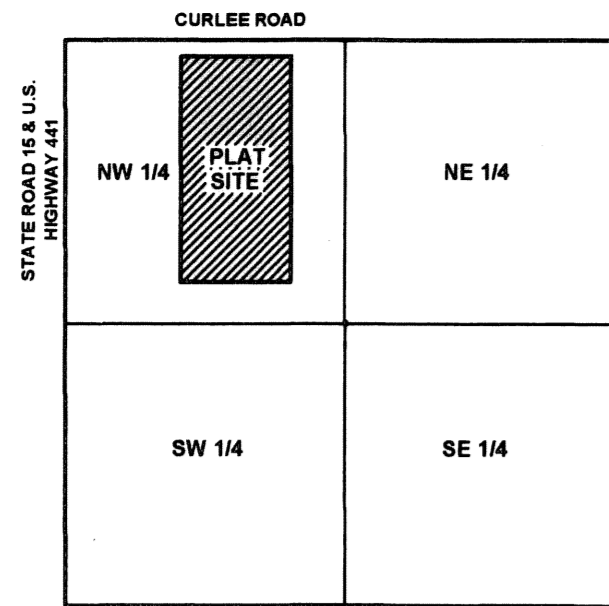
79

STATE OF FLORIDA  
 COUNTY OF PALM BEACH  
 THIS PLAT WAS FILED FOR  
 RECORD AT 1:17 PM  
 THIS 24<sup>th</sup> DAY OF June  
 2005 AND DULY RECORDED IN  
 PLAT BOOK NO. 105  
 ON PAGES 79-80

SHARON R. BOCK  
 CLERK OF THE CIRCUIT COURT  
 BY *Gloria L. Johnson*  
 DEPUTY CLERK



PART OF THE NORTHWEST QUARTER  
 OF SECTION 29 TOWNSHIP 43 SOUTH, RANGE 37 EAST,  
 CITY OF BELLE GLADE,  
 PALM BEACH COUNTY, FLORIDA  
 JANUARY 2005



LOCATION SKETCH NOT TO SCALE

**DEDICATION AND RESERVATION**

KNOW ALL MEN BY THESE PRESENTS THAT THE CITY OF BELLE GLADE, A MUNICIPAL CORPORATION, OWNER OF THE LAND SHOWN HEREON AS BELLE GLADE BUSINESS PARK, BEING MORE PARTICULARLY DESCRIBED AS FOLLOWS: COMMENCING AT THE NORTHWEST CORNER OF SECTION 29, TOWNSHIP 43 SOUTH, RANGE 37 EAST, PALM BEACH COUNTY, FLORIDA, THENCE SOUTH 0°22'48" EAST 150.00 FEET ALONG THE WEST LINE OF SAID SECTION 29 TO THE WESTERLY EXTENSION OF THE SOUTH RIGHT-OF-WAY LINE OF CURLEE ROAD AS NOW LAID OUT AND IN USE, THENCE NORTH 89°56'34" EAST 1094.28 FEET ALONG THE SOUTH RIGHT-OF-WAY LINE OF CURLEE ROAD, TO THE POINT OF BEGINNING OF THE HEREINAFTER DESCRIBED PARCEL, THENCE SOUTH 0°22'48" EAST 2101.42 FEET ALONG A LINE PARALLEL WITH THE WEST LINE OF SECTION 29, TOWNSHIP 43 SOUTH, RANGE 37 EAST, TO THE NORTH RIGHT-OF-WAY LINE OF THE FLORIDA EAST COAST RAILWAY SPUR TRACK TO THE SUGAR CANE GROWERS COOPERATIVE'S SUGAR MILL, THENCE NORTH 89°27'07" EAST 1038.65 FEET ALONG SAID RIGHT-OF-WAY LINE TO A POINT ON A LINE WHICH SAID LINE IS PARALLEL WITH THE WEST LINE OF SECTION 29, TOWNSHIP 43 SOUTH, RANGE 37 EAST, THENCE NORTH 0°22'48" WEST 1581.29 FEET ALONG SAID PARALLEL LINE, THENCE SOUTH 89°56'34" WEST 511.24 FEET ALONG A LINE PARALLEL WITH THE SOUTH RIGHT-OF-WAY LINE OF CURLEE ROAD, THENCE NORTH 0°22'48" WEST 511.23 FEET TO THE SOUTH RIGHT-OF-WAY LINE OF CURLEE ROAD, THENCE SOUTH 89°56'34" WEST 527.42 FEET ALONG THE SOUTH RIGHT-OF-WAY LINE OF CURLEE ROAD, TO THE POINT OF BEGINNING, CONTAINING .44 ACRES.

HAS CAUSED THE SAME TO BE SURVEYED AND PLATTED AS SHOWN HEREON AND DO HEREBY DEDICATE AND RESERVE AS FOLLOWS:

- ROADWAY TRACT**  
EAGLE CIRCLE, IS HEREBY DEICATED IN FEE SIMPLE TO THE CITY OF BELLE GLADE AS PUBLIC RIGHT OF WAY FOR STREET, UTILITY AND DRAINAGE PROPOSES.
- DRAINAGE TRACTS**  
TRACT L-1, AS SHOWN HEREON, IS HEREBY RESERVED IN FEE SIMPLE BY THE CITY OF BELLE GLADE FOR STORMWATER MANAGEMENT AND DRAINAGE PURPOSES.
- DRAINAGE EASEMENTS (D.E.)**  
DRAINAGE EASEMENTS, AS SHOWN HEREON, ARE HEREBY RESERVED BY THE CITY OF BELLE GLADE FOR THE INSTALLATION AND MAINTENANCE OF DRAINAGE FACILITIES.
- LANDSCAPE BUFFER EASEMENTS (L.B.E.)**  
LANDSCAPE BUFFER EASEMENTS, AS SHOWN HEREON, ARE HEREBY RESERVED BY THE CIYT OF BELLE GLADE FOR LANDSCAPE BUFFER PURPOSES.
- UTILITY EASEMENTS (U.E.)**  
THE UTILITY EASEMENTS, AS SHOWN HEREON, ARE HEREBY RESERVED BY THE CITY OF BELLE GLADE IN PERPETUITY FOR THE CONSTRUCTION AND MAINTENANCE OF UTILITY FACILITIES, INCLUDING CABLE TELEVISION SYSTEMS, THE INSTALLATION OF CABLE TELEVISION SYSTEMS SHALL NOT INTERFERE WITH THE CONSTRUCTION AND MAINTENANCE OF OTHER UTILITIES.
- CANAL MAINTENANCE AND UTILITY EASEMENTS (C.M. & U.E.)**  
CANAL MAINTENANCE AND UTILITY EASEMENTS, AS SHOWN HEREON, ARE HEREBY RESERVED BY THE CITY OF BELLE GLADE FOR CANAL MAINTENANCE AND UTILITY PURPOSES. THE UTILITY PORTION OF SAID EASEMENT SHALL ADHERE TO THE SAME STIPULATIONS AS RECITED ABOVE IN THE PREVIOUS NOTE.
- LIMITED ACCESS EASEMENTS (L.A.E.)**  
LIMITED ACCESS EASEMENTS, AS SHOWN HEREON, ARE HEREBY RESERVED BY THE CITY OF BELLE GLADE FOR THE PURPOSES OF PROHIBITING ACCESS BETWEEN LOTS AND ADJACENT RIGHTS-OF-WAY.
- EMERGENCY ACCESS EASEMENTS (E.A.E.)**  
EMERGENCY ACCESS EASEMENTS, AS SHOWN HEREON, ARE HEREBY RESERVED BY THE CITY OF BELLE GLADE EMERGENCY ACCESS PURPOSES.

IN WITNESS WHEREOF, THE CITY OF BELLE GLADE HAS CAUSED THESE PRESENTS TO BE SIGNED THIS 24<sup>th</sup> DAY OF June 2005

*Thomas Hoff*  
 WITNESS  
 CITY OF BELLE GLADE  
*Steve Wilson*  
 WITNESS  
 BY *Steve Wilson*

ACKNOWLEDGEMENTS  
 STATE OF FLORIDA )  
 ) SS  
 COUNTY OF PALM BEACH )

BEFORE ME PERSONALLY APPEARED STEVE WILSON, MAYOR OF THE CITY OF BELLE GLADE, WHO IS PERSONALLY KNOWN TO ME, ~~OR HAS PRODUCED A DRIVER'S LICENSE AS IDENTIFICATION~~, AND DID NOT TAKE AN OATH, AND WHO EXECUTED THE FOREGOING INSTRUMENT, AND SEVERALLY ACKNOWLEDGED TO AND BEFORE ME THAT HE EXECUTED SUCH INSTRUMENT AS SUCH OFFICER OF SAID CORPORATION, AND THE SEAL AFFIXED TO THE FOREGOING INSTRUMENT IS THE CORPORATE SEAL OF SAID CORPORATION AND THAT IT WAS AFFIXED TO SAID INSTRUMENT BY DUE AND REGULAR CORPORATE AUTHORITY, AND THAT SAID INSTRUMENT IS THE FREE ACT AND DEED OF SAID CORPORATION.

WITNESS MY HAND AND OFFICIAL SEAL THIS 24<sup>th</sup> DAY OF June 2005.

MY COMMISSION EXPIRES July 24, 2009  
*Richard H. Smith*  
 NAME  
 NOTARY PUBLIC-STATE  
 OF FLORIDA  
 COMMISSION NO. DD 437606

CITY PLANNING AND ZONING BOARD:  
 THIS IS TO CERTIFY THAT THIS PLAT HAS BEEN APPROVED BY THE PLANNING AND ZONING BOARD OF THE CITY OF BELLE GLADE, FLORIDA, THIS 22<sup>nd</sup> DAY OF June 2005

BY: *H. Wilson*  
 NAME, PRESIDENT

CITY ENGINEER:  
 THIS PLAT HEREBY APPROVED FOR THE RECORD THIS 21<sup>st</sup> DAY OF June 2005

BY: *Jeffery J. Bennett*  
 NAME, CITY ENGINEER  
 FLORIDA P.E. REG. NO. 18201

CITY COMMISSION:  
 THIS IS TO CERTIFY THAT THIS PLAT HAS BEEN APPROVED FOR RECORD BY THE CITY COMMISSION OF THE CITY OF BELLE GLADE PURSUANT TO RESOLUTION Regular Meeting  
 ADOPTED THIS 24<sup>th</sup> DAY OF June 2005

BY: *Steve Wilson*  
 STEVE WILSON, MAYOR

BY: *Sharon R. Bock*  
 SHARON R. BOCK, CITY CLERK  
 TITLE CERTIFICATION

STATE OF FLORIDA )  
 ) SS  
 COUNTY OF PALM BEACH )

I, *Alan J. T. P. C. Wilson*, A DULY LICENSED ATTORNEY IN THE STATE OF FLORIDA DO HEREBY CERTIFY THAT I HAVE EXAMINED THE TITLE TO THE HEREON DESCRIBED PROPERTY; THAT I FIND THE TITLE TO THE PROPERTY IS VESTED IN THE CITY OF BELLE GLADE; THAT THE CURRENT TAXES HAVE BEEN PAID; THAT THERE ARE NO MORTGAGES OF RECORD; AND THAT THERE ARE NO ENCUMBRANCES OF RECORD.

DATED: 23<sup>rd</sup> of June 2005  
*Alan J. T. P. C. Wilson*  
 ATTORNEY-AT-LAW LICENSED  
 IN FLORIDA

**SURVEYOR'S NOTES:**

- BEARINGS SHOWN HEREON ARE GRID BEARINGS OF THE FLORIDA STATE PLANE COORDINATE SYSTEM, EAST ZONE, ON THE 1983 NORTH AMERICAN DATUM, 1998 ADJUSTMENT.
- THE WEST LINE OF SECTION 29, TOWNSHIP 43 SOUTH, RANGE 37 EAST BEARS SOUTH 0°22'48" EAST AND ALL OTHR BEARINGS ARE RELATIVE THERETO.
- I.R. SET MEANS SET 5/8" IRON ROD AND CAP (L.B. 3411)
- P.C.P MEANS SET PERMANENT CONTROL POINT (L.B. 3411)
- P.R.M. MEANS SET PERMANENT REFERENCE MONUMENT (L.B. 3411)

**REVIEWING SURVEYOR'S STATEMENT:**

THIS IS TO CERTIFY THAT THE UNDERSIGNED PROFESSIONAL SURVEYOR AND MAPPER, UNDER CONTRACT WITH THE CITY OF BELLE GLADE, FLORIDA, HAS REVIEWED THIS PLAT OF BELLE GLADE BUSINESS PARK-PHASE II AS REQUIRED BY CHAPTER 177.081 (1), FLORIDA STATUTES, AND FINDS THAT IT COMPLIES WITH ALL THE REQUIREMENTS OF CHAPTER 177, PART 1, FLORIDA STATUTES.

DATED: June 24, 2005  
*Richard H. Smith*

NAME: RICHARD H. SMITH

FLORIDA LICENSE No. 5239

**SURVEYOR & MAPPER'S CERTIFICATE**

THIS IS CERTIFY THAT THE PLAT SHOWN HEREON IS A TRUE AND CORRECT REPRESENTATION OF A SURVEY MADE UNDER MY RESPONSIBLE DIRECTION AND SUPERVISION; THAT SAID SURVEY IS ACCURATE TO THE BEST OF MY KNOWLEDGE AND BELIEF; THAT PERMANENT REFERENCE MONUMENTS ("P.R.M.S"), PERMANENT CONTROL POINTS ("P.C.P.S"), AND MONUMENTS ACCORDING TO SEC. 177.091 (9), F.S., HAVE BEEN PLACED AS REQUIRED BY LAW; AND, FURTHER, THAT THE SURVEY DATA COMPLIES WITH ALL THE REQUIREMENTS OF CHAPTER 177, FLORIDA STATUTES, AS AMENDED.

DATE: June 22, 2005

*Fernando Gonzalez*  
 FERNANDO GONZALEZ  
 PROFESSIONAL SURVEYOR AND MAPPER  
 FLORIDA LICENSE NUMBER 4994

**NOTICE:**  
 This plat as recorded in its graphic form, is the official depiction of the subdivided lands described herein and will in no circumstances be supplanted in authority by any other graphic or digital form of the plat.  
 There may be additional restrictions that are not recorded in this plat that may be found in the public records of this county.

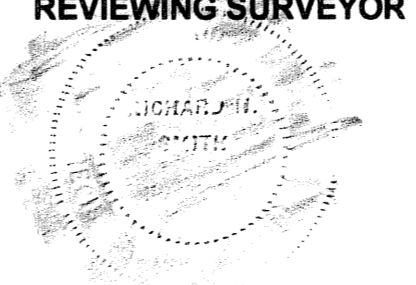
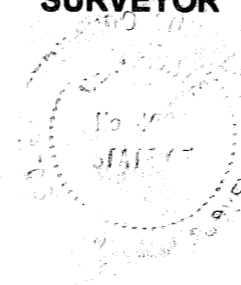
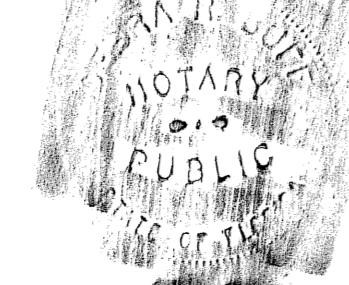
THE CITY OF BELLE GLADE  
 OWNER

OWNER'S NOTARY

CITY OF BELLE GLADE

SURVEYOR

REVIEWING SURVEYOR



P:\03-048620-048620\SURVEY\PLAT\042389P.dwg, REC PLAT 1 OF 2, 05/10/2005 9:27:46 AM, mimgn-3, LBFLV.c